



Profitability. Sustainability. Competitiveness.

“Using OAD milking in mid-late lactation” trial

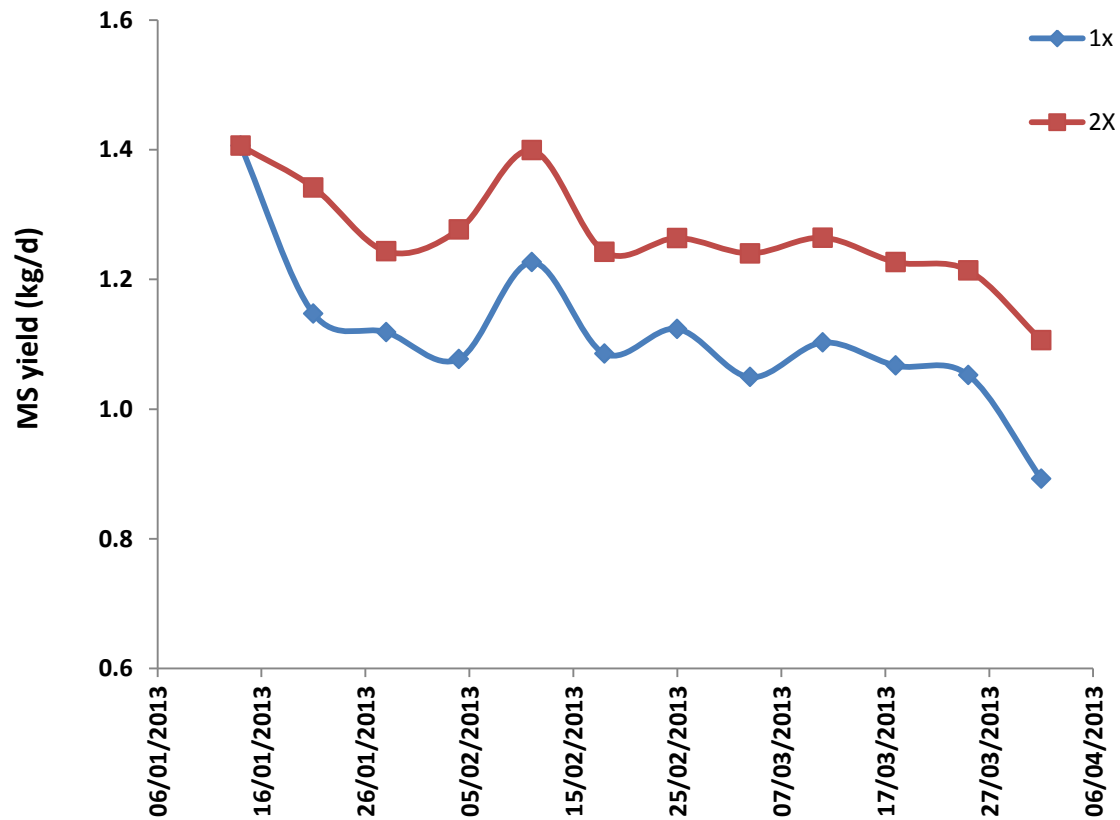
Jane Kay, John Roche and Claire Phyn

1X milking in mid-late lactation

- 52 cows
 - 18 d in Calan Gates
 - 10 d out grazing
- From 21st Jan to dry off (mid-April)
 - 1X milking
 - 2X milking
- Milk production, intake and BCS gain



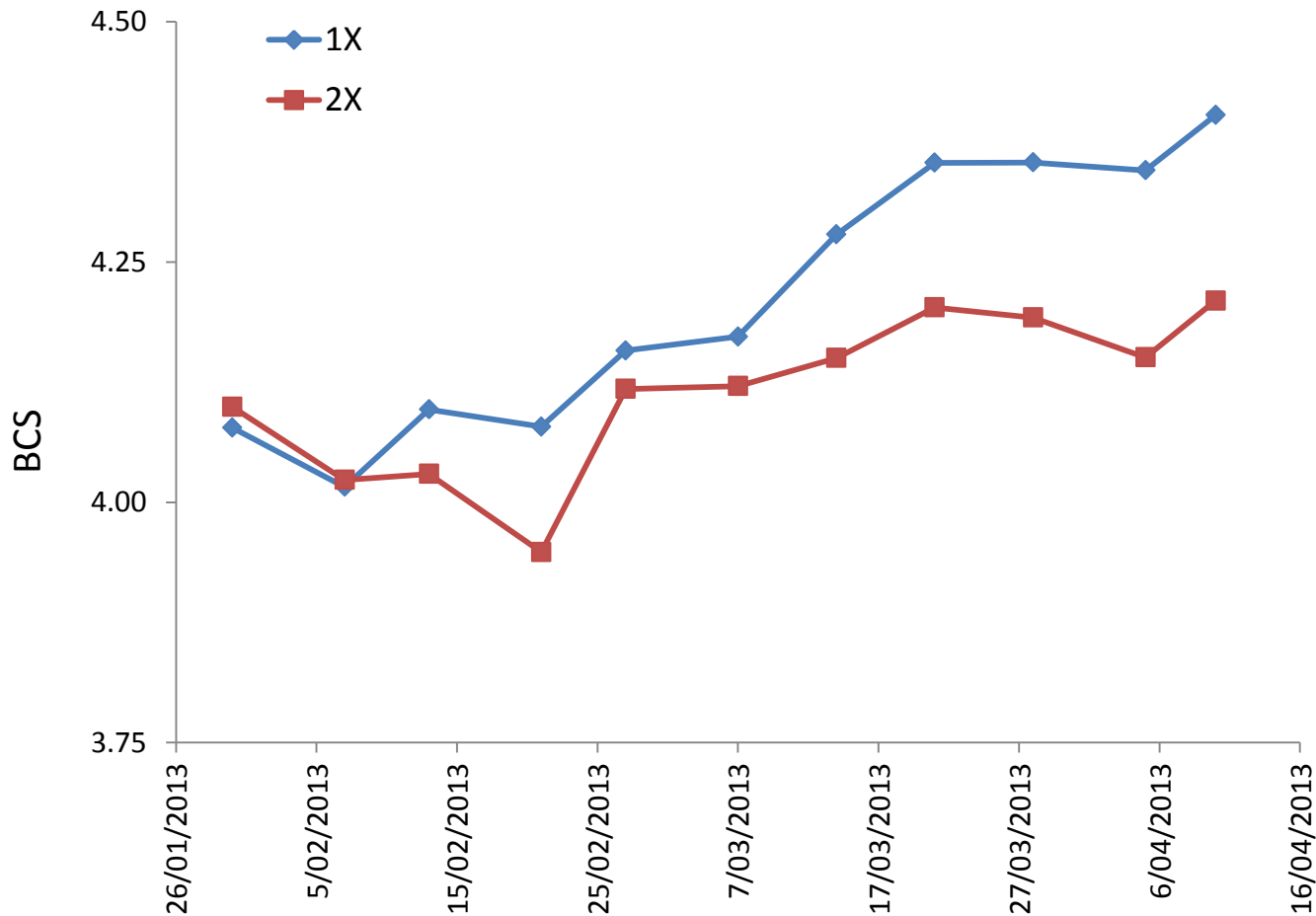
Milksolids



MS loss
1X milking

14%

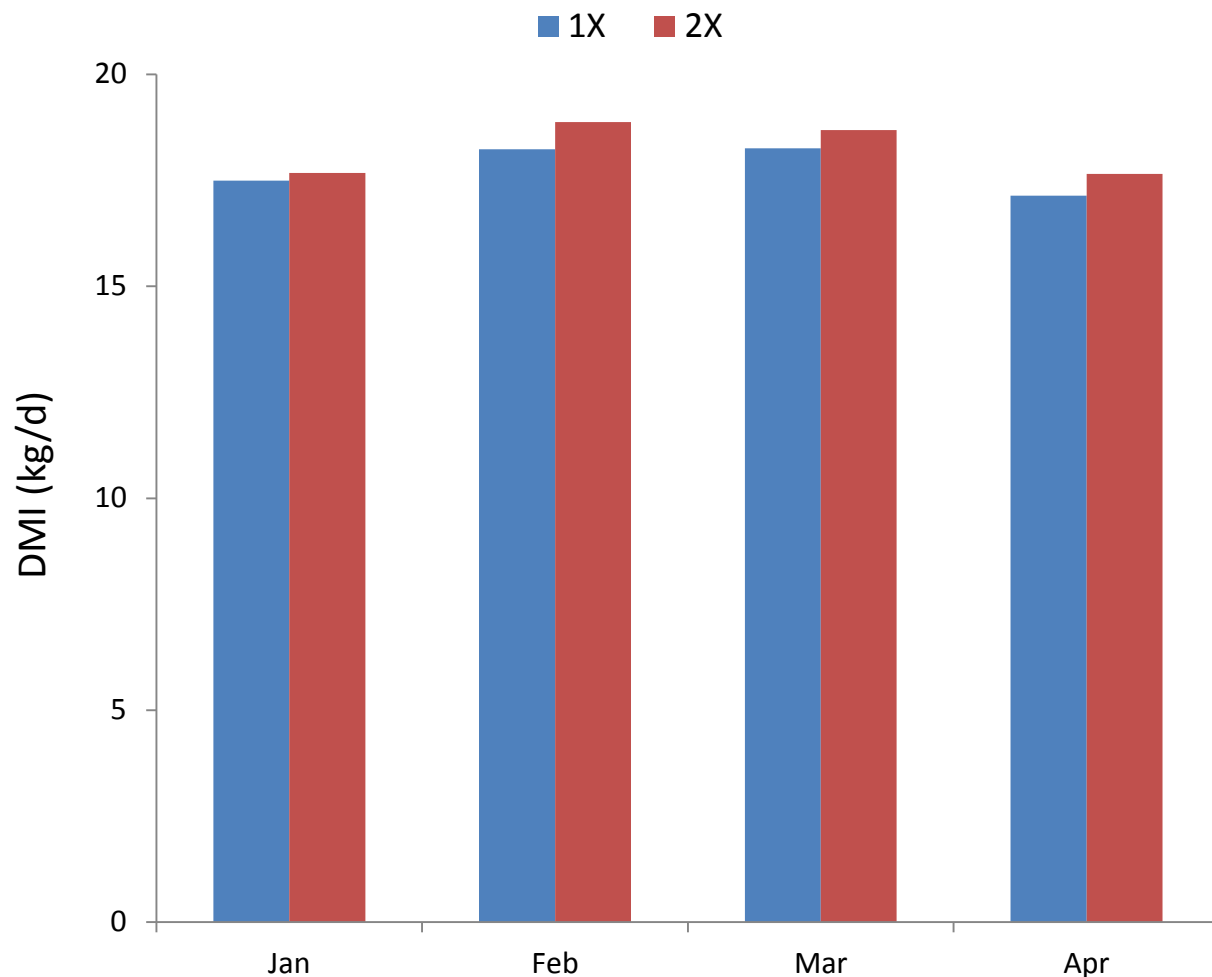
Body condition score



BCS gain
1X milking

1/4

Feed demand



Intake
difference

2%

Intake
(kg/day)

0.4

1X milking in mid to late lactation

- Reduced MS production by 14%
 - Total season loss of ~6% (if 60% MS produced by Jan)
- Increased BCS gain by 0.25 BCS unit
- Very small difference in intake (0.4 kg/day)
 - Reduced feed requirements during dry period to reach BCS targets at calving

